

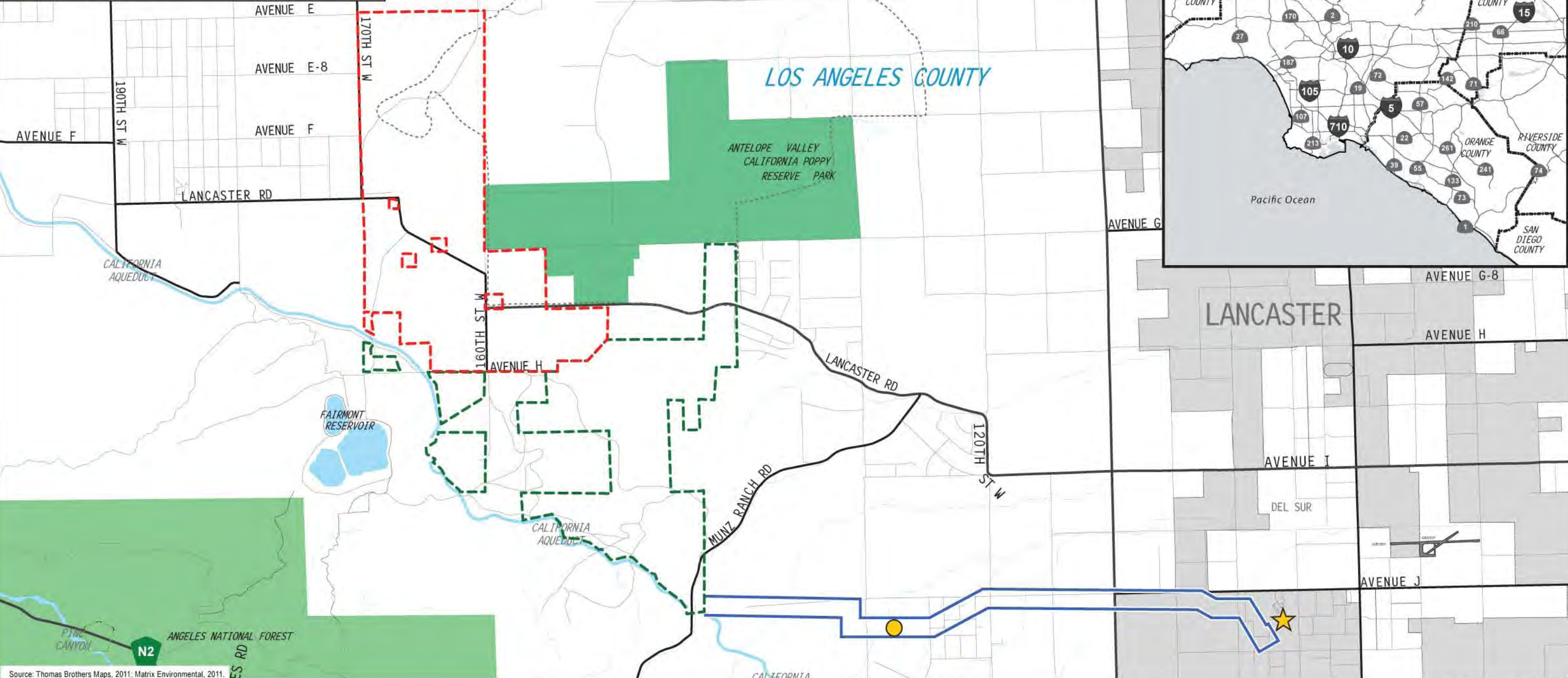
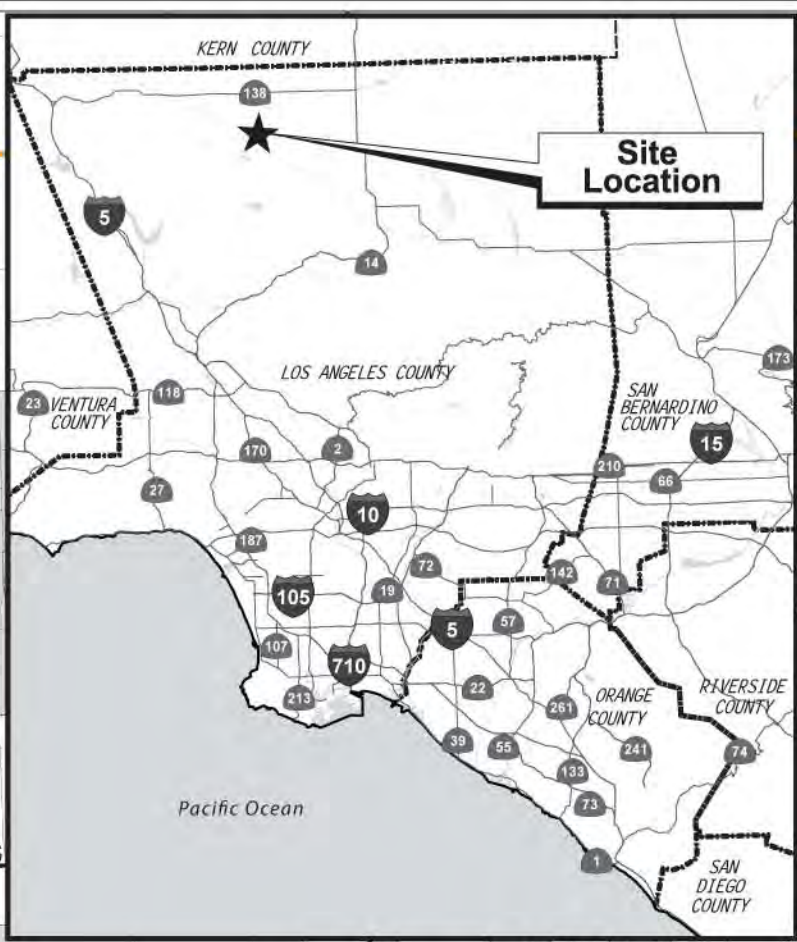
Agenda Item 11(d)
SMMC
1/23/12

LEGEND

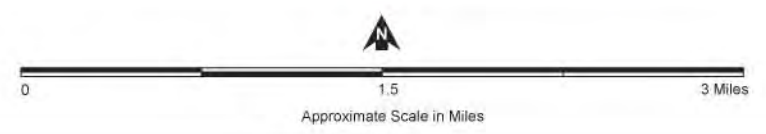
PROJECT SITE

- Proposed Northern Energy Farm
- Proposed Southern Energy Farm
- Proposed Gen-Tie Corridor

- Fairmont And Antelope Buttes Significant Ecological Area (SEA #57)
- ★ SCE Antelope Valley Substation Point of Interconnection
- LADWP Point of Interconnection



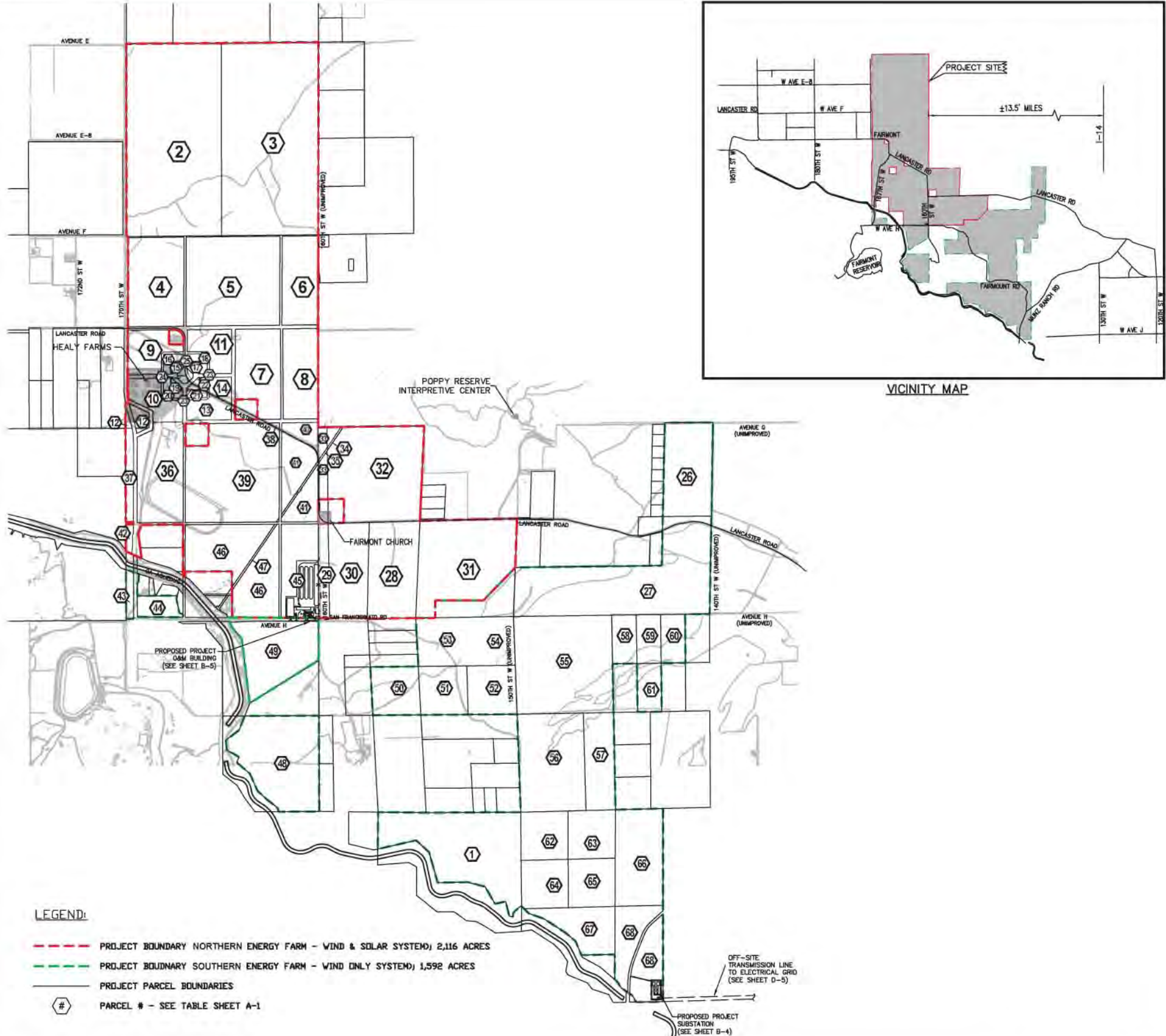
Source: Thomas Brothers Maps, 2011; Matrix Environmental, 2011.

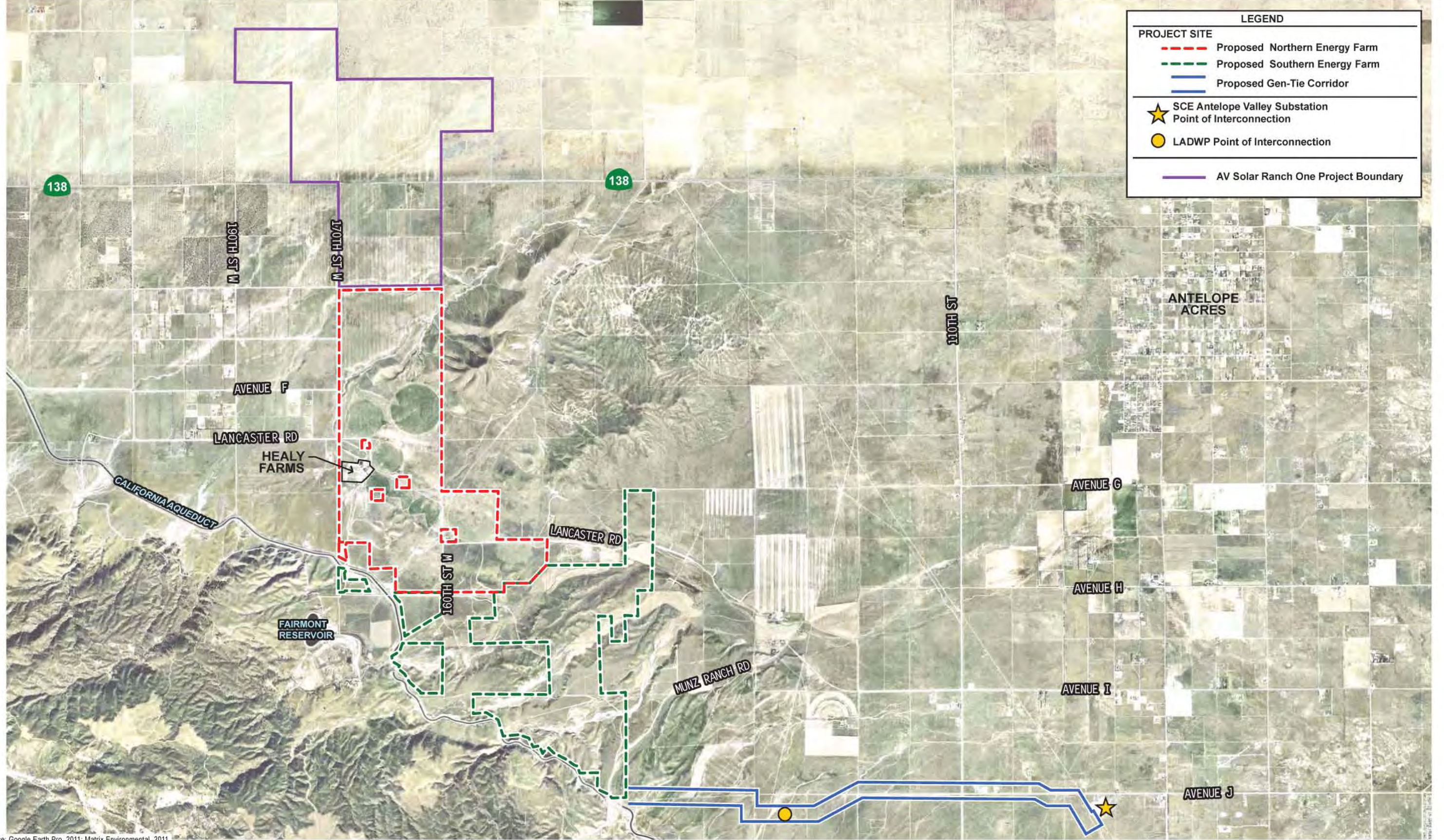


Wildflower Green Energy Farm
Figure 1
Regional and Local Vicinity Map

ASSESSOR'S PARCEL NO.	PARCEL OWNER	APN LEGAL	APN ACREAGE
1	GENZ DEVELOPMENT INC	LOT COM AT NE COR OF SEC 18 T 7N R 14W T	152.74
2	WATT BUILDERS LLC	W 1/2 (EX OF ST) OF SEC 25 T 8N R 15W	317.56
3	HEALY ENTERPRISES INC	E 1/2 OF SEC 25 T 8N R 15W	323.49
4	HEALY ENTERPRISES INC	FAIRMONT SUB OF SEC 1 T 7N R 15W AND SEC	86.31
5	HEALY ENTERPRISES INC	FAIRMONT SUB OF SEC 1 T 7N R 15W AND SEC	144.91
6	HEALY ENTERPRISES INC	FAIRMONT SUB OF SEC 1 T 7N R 15W AND SEC	55.78
7	HEALY ENTERPRISES INC	FAIRMONT SUB OF SEC 1 T 7N R 15W AND SEC	63.53
8	HEALY ENTERPRISES INC	FAIRMONT SUB OF SEC 1 T 7N R 15W AND SEC	55.10
9	HEALY ENTERPRISES INC	FAIRMONT SUB OF SEC 1 T 7N R 15W AND SEC	30.71
10	HEALY ENTERPRISES INC	FAIRMONT SUB OF SEC 1 T 7N R 15W AND SEC	26.26
11	HEALY ENTERPRISES INC	FAIRMONT SUB OF SEC 1 T 7N R 15W AND SEC	25.60
12	HEALY ENTERPRISES INC	THAT PART (EX OF ST) OF SW 1/4 LYING S A	6.98
13	HEALY ENTERPRISES INC	LAND DES IN PAR 4 DOC 2850, 74-7-25 FAIR	16.05
14	HEALY ENTERPRISES INC	FAIRMONT SUB OF SEC 1 T 7N R 15W AND SEC	8.34
15	HEALY ENTERPRISES INC	FAIRMONT BEING A PART OF SW 1/4 OF SEC 3	1.44
16	HEALY ENTERPRISES INC	FAIRMONT BEING A PART OF SW 1/4 OF SEC 3	4.04
17	HEALY ENTERPRISES INC	FAIRMONT BEING A PART OF SW 1/4 OF SEC 3	1.46
18	HEALY ENTERPRISES INC	FAIRMONT BEING A PART OF SW 1/4 OF SEC 3	4.17
19	HEALY ENTERPRISES INC	FAIRMONT BEING A PART OF SW 1/4 OF SEC 3	1.43
20	HEALY ENTERPRISES INC	FAIRMONT BEING A PART OF SW 1/4 OF SEC 3	3.98
21	HEALY ENTERPRISES INC	LAND DES IN PAR 3C DOC 2850, 74-7-5 FAIR	2.60
22	HEALY ENTERPRISES INC	FAIRMONT BEING A PART OF SW 1/4 OF SEC 3	1.60
23	HEALY ENTERPRISES INC	LAND DES IN PAR 3C DOC 2850, 74-7-25 FAI	0.77
24	HEALY ENTERPRISES INC	LAND DES IN PAR 3B DOC 2850, 74-7-25 FAI	1.09
25	HEALY ENTERPRISES INC	FAIRMONT BEING A PART OF SW 1/4 OF SEC 3	1.89
26	HEALY ENTERPRISES INC	THAT PART OF LOT 1 IN SE 1/4 OF NE 1/4 A	78.67
27	HEALY ENTERPRISES INC	S 1/2 OF S 1/2 AND NE 1/4 OF SE 1/4 OF S	207.63
28	SALAZAR ENRIQUE & MACLOVIA	80 ACS LOT 1 IN SW 1/4 OF SEC 6 T 7N R 1	83.48
29	KAY SAUL H & RIMA S	THAT PART (EX OF ST) IN CONSOLIDATED FIR	17.15
30	KAY SAUL H & RIMA S	THAT PART (EX OF ST) OUTSIDE CONSOLI- DA	64.77
31	HEALY ENTERPRISES INC	SE 1/4 OF SEC 6 T 7N R 14W	164.61
32	HEALY ENTERPRISES INC	*E 1/2 OF LOTS 1 AND 2 AND E 1/2 OF W 1/	149.28
33	HEALY ENTERPRISES INC	*THAT POR IN CONSOLIDATED FIRE PRO DIST	11.06
34	ANTELOPE VALLEY EAST KERN WATER AGENCY	*LAND DESC IN DOC 0000259, 76-3-22 *THAT	0.84
35	ANTELOPE VALLEY EAST KERN WATER AGENCY	*LAND DESC IN DOC 0000259, 76-3-22 *THAT	0.51
36	HEALY ENTERPRISES INC	FAIRMONT SUB OF SEC 1 T 7N R 15W AND SEC	77.29
37	HEALY ENTERPRISES INC	LOT (EX OF ST) COM AT NW COR OF SEC 1 T	13.23
38	HEALY ENTERPRISES INC	FAIRMONT SUB OF SEC 1 T 7N R 15W AND SEC	0.81
39	HEALY ENTERPRISES INC	*TR=FAIRMONT SUB OF SEC 1 T 7N R 15W AND	151.47
40	HEALY ENTERPRISES INC	*TR=FAIRMONT SUB OF SEC 1 T 7N R 15W AND	11.69
41	HEALY ENTERPRISES INC	*TR=FAIRMONT SUB OF SEC 1 T 7N R 15W AND	49.45
42	HEALY ENTERPRISES INC	LOT COM AT W 1/4 COR OF SEC 1 T 7N R 15W	3.45
43	HEALY ENTERPRISES INC	LOT COM AT INTERSECTION OF W LINE OF SEC	6.21
44	HEALY ENTERPRISES INC	FAIRMONT, SUB OF SEC 1 T 7N R 15W AND SE	15.32
45	HEALY ENTERPRISES INC	FAIRMONT SUB OF SEC 1 T 7N R 15W AND SEC	60.81
46	HEALY ENTERPRISES INC	*TR=FAIRMONT SUB OF SEC 1 T 7N R 15W AND	111.93
47	ANTELOPE VALLEY EAST KERN WATER AGENCY	*TR=FAIRMONT SUB OF SEC 1 T 7N R 15W AND	2.46
48	LEONA VALLEY HUNTING CLUB	LOT COM AT SE COR OF SEC 12 T 7N R 15W T	120.46
49	HEALY ENTERPRISES INC	*LOT COM N ON E LINE OF SEC 12 T 7N R 15	81.00
50	BAYSHORE LLC	THAT PART IN S 1/2 OF LOT 1 IN NW 1/4 OF	40.24
51	BLUE RIBBON ENTERPRISES LLC	SW 1/4 OF NE 1/4 OF SEC 7 T 7N R 14W	40.36
52	TSE KING F	SE 1/4 OF NE 1/4 OF SEC 7 T 7N R 14W	41.28
53	BAYSHORE LLC	T07N R14W Sec. 7 NW NE	0.00
54	BAYSHORE LLC	T07N R14W Sec. 7 NE NE	0.00
55	HEALY ENTERPRISES INC	160 ACS NW 1/4 OF SEC 8 T 7N R 14W	164.61
56	MADAN S K & SHOBHANA	W 110 ACS OF SW 1/4 OF SEC 8 T 7N R 14W	111.40
57	SIMIELE ANTHONY J	E 50 ACS OF SW 1/4 OF SEC 8 T 7N R 14W	50.47
58	BAYSHORE LLC	P M 241-4-5 LOT 1	20.57
59	BAYSHORE LLC	P M 241-4-5 LOT 2	20.54
60	BAYSHORE LLC	P M 241-4-5 LOT 3	20.51
61	BAYSHORE LLC	P M 241-4-5 LOT 7	20.36
62	GENZ DEVELOPMENT INC	NW 1/4 OF NW 1/4 OF SEC 17 T 7N R 14W	39.58
63	GENZ DEVELOPMENT INC	NE 1/4 OF NW 1/4 OF SEC 17 T 7N R 14W	39.60
64	GENZ DEVELOPMENT INC	LOT COM AT NW COR OF SW 1/4 OF NW 1/4 OF	39.26
65	GENZ DEVELOPMENT INC	40 ACS SE 1/4 OF NW 1/4 OF SEC 17 T 7N R	39.31
66	GENZ DEVELOPMENT INC	W 1/2 OF NE 1/4 OF SEC 17 T 7N R 14W	79.95
67	GENZ DEVELOPMENT INC	LOT COM AT CENTER OF SEC 17 T 7N R 14W T	46.06
68	GENZ DEVELOPMENT INC	LOT (EX OF ST) COM AT CENTER OF SEC 17 T	72.54
			3708.05

Source: Fuscoe Engineering, September 2011.





LEGEND

PROJECT SITE

- Proposed Northern Energy Farm
- Proposed Southern Energy Farm
- Proposed Gen-Tie Corridor

- ★ SCE Antelope Valley Substation Point of Interconnection
- LADWP Point of Interconnection

- AV Solar Ranch One Project Boundary

Source: Google Earth Pro, 2011; Matrix Environmental, 2011.

Wildflower Green Energy Farm



Figure 3
Aerial Photograph